

Methodology for Characterization of a Clastic Reservoir Based on Correlations between Electrofacies, NMR and Image Logs. A Case Study from the Gulf of San Jorge Basin

Nestor Acosta¹, Pedro Romero¹, Gustavo Magenta¹, Gustavo Potas², Cecilia Cabrera², Carlos Coccia², Luciano Di Benedetto², Leonor Ferreira²

¹ Baker Hughes Inc., division Baker Atlas ² Repsol-YPF UELH- UNAS. Comodoro Rivadavia, Chubut, Argentina.

Copyright 2007, SBGF –Society Brasileira de Geofísica

This paper was prepared for presentation at the 10th International Congress of the Brazilian Geophysical Society, held in Rio de Janeiro, Brazil, November 19–22, 2007.

Contents of this paper were reviewed by the Technical Committee of the 10th International Congress of the Brazilian Geophysical Society and do not necessarily represent any position of the SBGF, its officers or members. Electronic reproduction, or storage of any part of this paper for commercial purposes without the written consent of the Brazilian Geophysical Society is prohibited.*

Abstract

This work presents a new methodology for characterization of clastic reservoirs. It has been developed with data from the Bajo Barreal Formations of the Gulf of San Jorge Basin. It is based on the definition of Electrofacies using conventional open hole logs and correlations with resistivity image and NMR logs (T2 distributions and Diffusivity maps); in addition, these data has been associated with information from neighbor wells and 3D seismic.

The electrofacies analysis has allowed us to interpret sedimentary deposits from continental environment. Furthermore, it yielded information on structural dip of the area and the directions of paleoflows of the reservoirs, in agreement with the seismic interpretation and outcrops observations at the surface.

As a result of this study, a reservoir classification could be established, supported by criteria related to sedimentary genesis, petrophysical characteristics and fluid typing, for which NMR log analysis has added a very significant value.

This methodology for reservoir characterization will find future implementations in the generation of geological models, especially in areas with enough amounts of data at disposal. These areas are of particular interest for purposes of validation and testing the models towards reducing the uncertainty in the selection of future well locations.

INTRODUCTION

The San Jorge Basin has a mainly fluvial depositional environment, where the reservoirs are very difficult to characterized, as their properties are not easy to correlate against each other. Therefore, the generation of a sedimentary model it is very important for developing the reservoir.

This work intends to show how the log data from high technology tools, utilized whether as

individual or in combination among themselves, along with information from seismic and outcrops can be integrated into a geological model.

The present study was developed with information from the Bajo Barreal formation, which is part of the Chubut Group (Lesta, 1968), of Cretaceous age (Fig. 1). The production layers are sedimentites from the West side of the basin. This group represents the sedimentary activity of the thermal subsidence age, posterior to the Jurassic rift, the origin of the basin (Figari *et al.*, 1999).

Although many authors believe that the depositional environment of the Bajo Barreal formation is fluvial, some really contrastful paleo-environmental models have also been proposed. The range of scenarios can go from ephemeral currents (Hechem 1994) to perennial rivers in a humid temperate climate (Bridge *et al.*, 2000). In general, it is accepted that these sedimentites are product of river systems activities in an environment characterized by the permanent contribution of pyroclastic material, especially in the basal section of the formation (tuff section). Within the geological succession, the reservoirs are constituted by the numerous body layers placed in the river belts, conforming a multilayered reservoir system, frequently without any lateral connectivity. The thickness average of the sandy bodies is of 3 m, with a lateral extension that varies between 300 and 1500 meters.

The structural configuration of the productive column of the zone responds to the superimposition of the two recognized deformation styles for the western side of the basin: 1. the extensional structures associated with the Jurassic rift, of predominant orientation WNW-ESE, and 2. the compressional train of sub-meridian course, linked to the Andean compression (see Fig.2, taken from Sanagua *et al.*, 2002).

PROPOSED METHODOLOGY

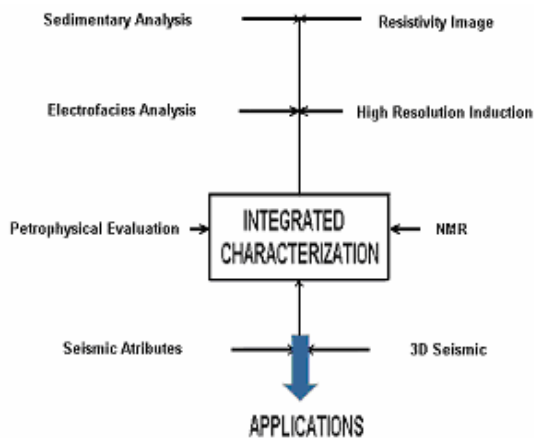
The proposed reservoir characterization methodology has as main objective the generation of a geological sedimentary model, based on the detailed analysis of log data from high technology open hole logging tools, as High Vertical Resolution Induction (HDIL), Resistivity Images (STAR) and MREX for NMR logging, and to integrate the log data with geophysical (seismic)

and geological data (outcrops) from the analyzed area.

The resistivity image is obtained from a six-pad logging device recorded with 24 buttons each, covering 60% of the circumference for 8 inches well bore. The image log allowed the detailed sedimentological analysis of the main reservoir layers of the formation. In addition, by means of statistical analysis, the direction of paleoflows could also be determined.

The MREX logging tool is run in the POROPERM + OIL data acquisition mode (Chen *et al.* 2003). It provides the NMR data to be evaluated with two post processing modules: the Formation Evaluation and Diffusion-T2intrinsic maps, for rock quality and fluid type characterization purposes respectively. The outputs of this evaluation are the total and effective porosities, hydrocarbon types, oil and water saturations, discriminating between bound and movable water and NMR permeability. By quantifying the heavy oil saturation from the D-T2int maps, it is also possible to correct the permeability for the presence of heavy oil, normally affecting the bound fluid volume (Romero *et al.*, 2007).

Table 1 schematic methodology for integrated reservoir characterization



The sedimentary analysis carried out on these log data intends to define different types of reservoirs based on probable common characteristics which can be associated with the reservoir quality.

ELECTROFACIES AND GEOLOGICAL INTERPRETATION

From the analysis of electrofacies, done following the Serra and Abott criteria (1982), and of internal images structures, interpreted from the image logs, one can infer that the sandy bodies do have a common sedimentary pattern. These characteristics are also notorious in the evaluation of the textural variations, of tone and structures obtained from the analysis of the dips patterns observed on the images. The heterogeneity in the resistivity image allows inferring on important

variations of the petrophysical properties of the layers.

Reservoir Type I

They present important thickness with probable parallel stratification separated in sets with increasing arrangement (form of block). The abundance of such sand bodies with these characteristics permits to infer on the presence of amalgamated sequences, formed by smaller bodies that conform the greater sequences. These reservoirs show good petrophysical properties, otherwise deteriorated in reservoirs of different types (Fig. 3).

The thickness of this reservoir type is variable and the contact is generally erosive and occasionally transitional. The occasional presence of contacts of erosive base, suggests events of high flow regime for the backfilling after the erosive events. The arrangement is clearly grain descendent in depth. The conditions of deposition are clearly associated with traction processes, suggesting the presence of crossed stratification in trough and parallel. The image shows marked sedimentary characteristics determining regular distribution of the porosity. Transportation of bed loads in traction process.

Reservoir Type II

The thickness of this reservoir type is variable; its contact is generally erosive and sometimes transitional. The occasional presence of contacts of erosive base, suggests of high flow regime events for the backfilling after the erosion. The arrangement is clearly grain descendent in depth. The conditions of deposition are associated with traction processes, suggesting the presence of crossed stratification in trough and parallel. The image shows marked sedimentary characteristics and hence a regular distribution of the porosity. Transportation of bed loads in traction process (Fig.4).

Reservoir Type 3

They present poor deflection on the SP curve, with sharp peak shape; the resistivity contrast does not result very significant. These reservoirs have a high dispersion of the dip patterns. Transportation as bed loads in traction processes (Fig.5).

Evaluation of reservoir quality by means of NMR logs

The deliverables of the post processing regarding rock quality evaluation from the MREX log are:

- MPHS: Total porosity
- MPHE: Effective porosity –
- MBVI: Associated porosity to capillary bound water Implaceable Fluids
- MBVM: Associated porosity to mobile Fluids
- Kc: Index of Permeability Index by Timur-Coates.

(Fig.6).

The parameters utilized to define the quality of the reservoirs are: the NMR-Permeability from Timur-Coates and the associated porosity of movable

fluids (MBVM), as the amounts of movable and bound fluids are very precise indicators of the reservoir quality.

FLUID TYPING

NMR based fluid typing is based on the evaluation of the reservoir oil (heavy, medium, light) from the 2D-NMR maps. These maps also allow a quantification of the fluids, so that a saturation log for the invaded zone can be generated (Fig.7).

APPLICATIONS OF THE MODEL

With the interpretations carried out on the resistivity images of this well is possible to infer a probable depositional direction and the possible orientation of the sandy bodies. Due to the presence of variations in sedimentary media in the study area, the directions of paleocorrientes evaluated using a geological sedimentary model, can be considered more reliable for deciding future well locations (Fig.8).

CONCLUSIONS

- The utilization of a similar log suite and the used of the electrofacies methodology for determine the depositional environment can be used for selecting well locations that will allow the consolidation and extrapolation of the model or, eventually, its gradual modification.

-NMR can be used for rock quality determination and fluid typing purposes in this type of formation and electrofacies..

-Examples can be verified in the Cañadon Vasco reservoir, operated by Repsol-YPF.

ACKNOWLEDGEMENTS

The authors thank to REPSOL-YPF and Baker Atlas for the permission to publishing this paper.

REFERENCES

- [1] BRIDGE, J. S., JALFIN, G. A. & GEORGIEFF, S. M. (2000), Geometry, Lithofacies and spatial distribution of cretaceous fluvial sandstone bodies, San Jorge Basin, Argentina: Outcrop analog for the Hydrocarbon –Bearing Chubut Group. *Journal of Sedimentary Research*, Vol. 70, N° 2, p. 341 – 359.
- [2] CHEN, S. BEARD, D. GUILLEN, M, FANG D and ZHANG G.: Magnetic Resonance Explorer Log Acquisition Methods: Petrophysical-Objective_Oriented Approaches, Society of Professional Well Log Analysis. 44th Annual Logging Symposium, June 22-25, 2003
- [3]DIPILOG: Paleoambientes y Estructuras. Western Atlas International. Atlas Wireline Services.
- [4] FIGARI, E., LAFFITTE, G., LAFOURCADE, P., STRELKOV, E., CID DE LA PAZ, M. Y VILLAR, H. J.(1999), Los sistemas petroleros de la Cuenca del Golfo San Jorge: Síntesis Estructural,

Estratigrafía y Geoquímica. IV Congreso de Exploración y Desarrollo de Hidrocarburos, Actas 1:197-238.

[5] HECHEM, J. (1994), Modelo predictivo de reservorios en un sistema fluvial efímero del Chubutiano de la Cuenca del Golfo San Jorge, Argentina. *Revista de la Asociación Argentina de Sedimentología*, Vol. 1: 3-14.

[6] HOMOVC, J. Y LUCERO, M. (2002), Cuenca del Golfo San Jorge: Marco Geológico y reseña histórica de la actividad petrolera. En M. Schiuma, G. Hinterwimmer y G. Vergani (Eds.): *Rocas reservorio de las cuencas productivas de la Argentina: Simposio del V Congreso de Exploración y Desarrollo de Hidrocarburos*, Mar del Plata, p. 119-134.

[7] HECHEM J., HOMOVC, J. y E. FIGARI, 1990. *Estratigrafía del Chubutiano (Cretácico) en la sierra de San Bernardo, Cuenca del Golfo San Jorge, Argentina*. 11 Congreso Geológico Argentino, v 3, p.173-176.

[8] SERRA, O. and H. T. ABBOTT, 1982. The contributions of loggings data to sedimentology and Stratigraphy: *Society of Petroleum Engineers Journal*, 22, 117-131.

[9] GÓMEZ, H., STINCO, L. NAWRATIL, A., LOPETRONE, J., ROMERO, P., SAAVEDRA, B., Correction of Bound And Free Fluid Volumes In The Timur-Coates Permeability Equation For The Presence Of Heavy Oil - A Case Study From The Golfo San Jorge Basin, Argentina, SPE 107784, LAPEC07, Buenos Aires, Argentina, 16-18 April, 2007.

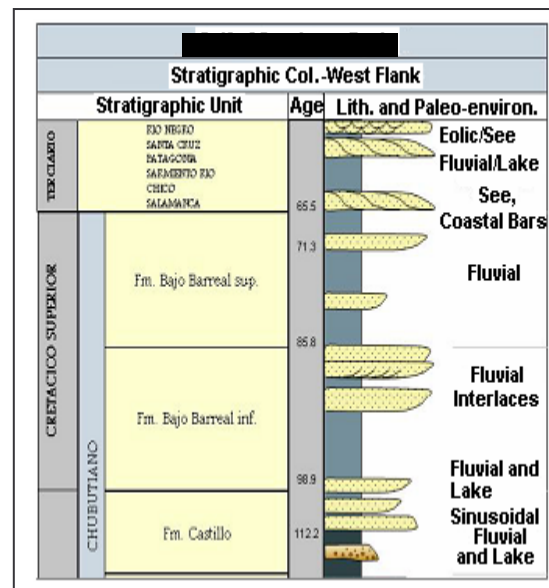


Figure 1. Stratigraphic column Bajo Barreal formation in San Jorge Basin.

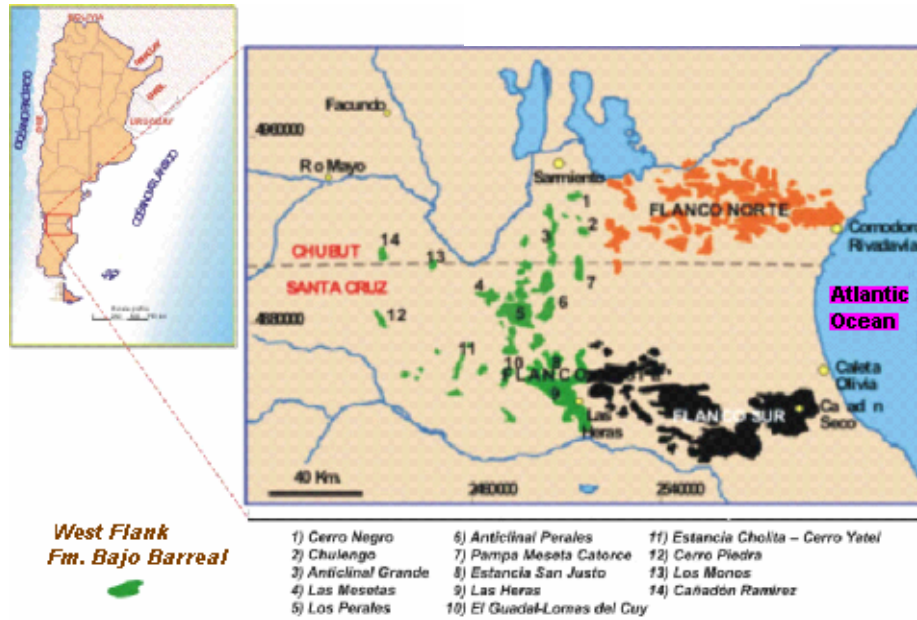
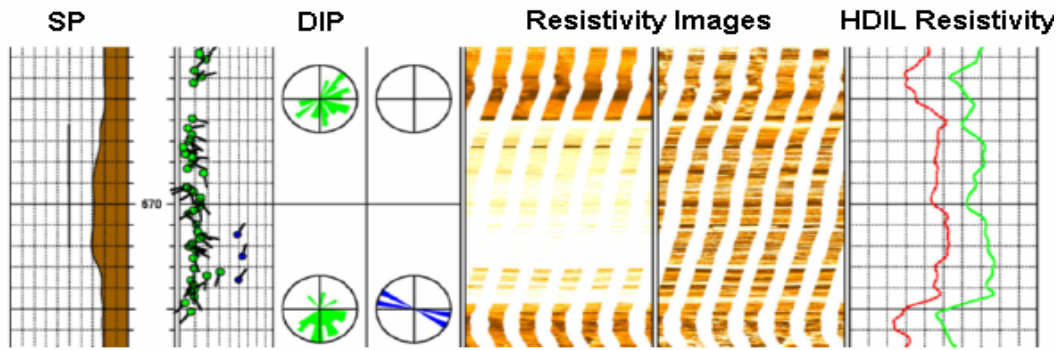
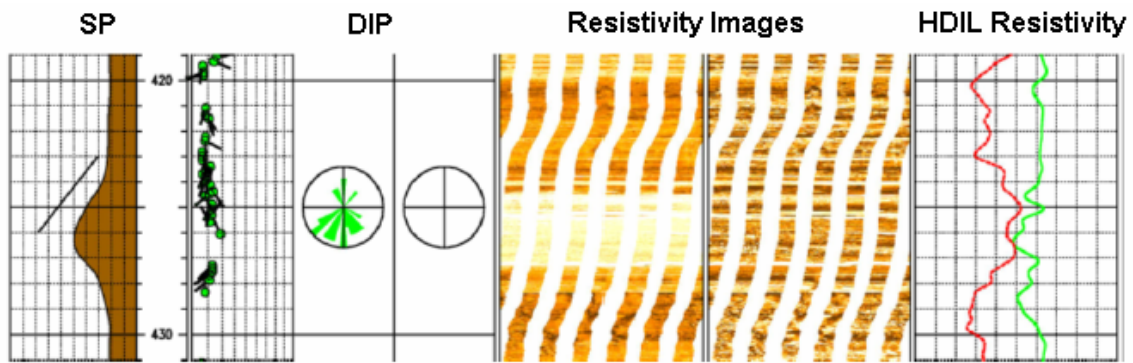


Figure 2. Geographic location of the Gulf of San Jorge Basin and details of the reservoir within the West Flank (from Sanagua et al, 2002).



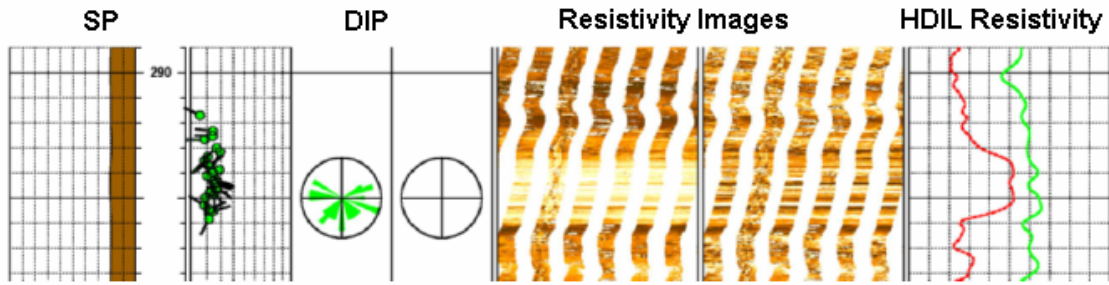
Block arrangement. Parallel stratification separated in sets

Figure 3 Log responses for reservoir type I.



Grain decreasing arrangement. Cross-Stratification. Erosive contact but occasional transitional at the bottom.

Figure 4 Log responses for reservoir type II.



Poor SP deflection. Peak shaped resistivity. Scattered dip pattern

Figure 5 Log responses for reservoir type III.

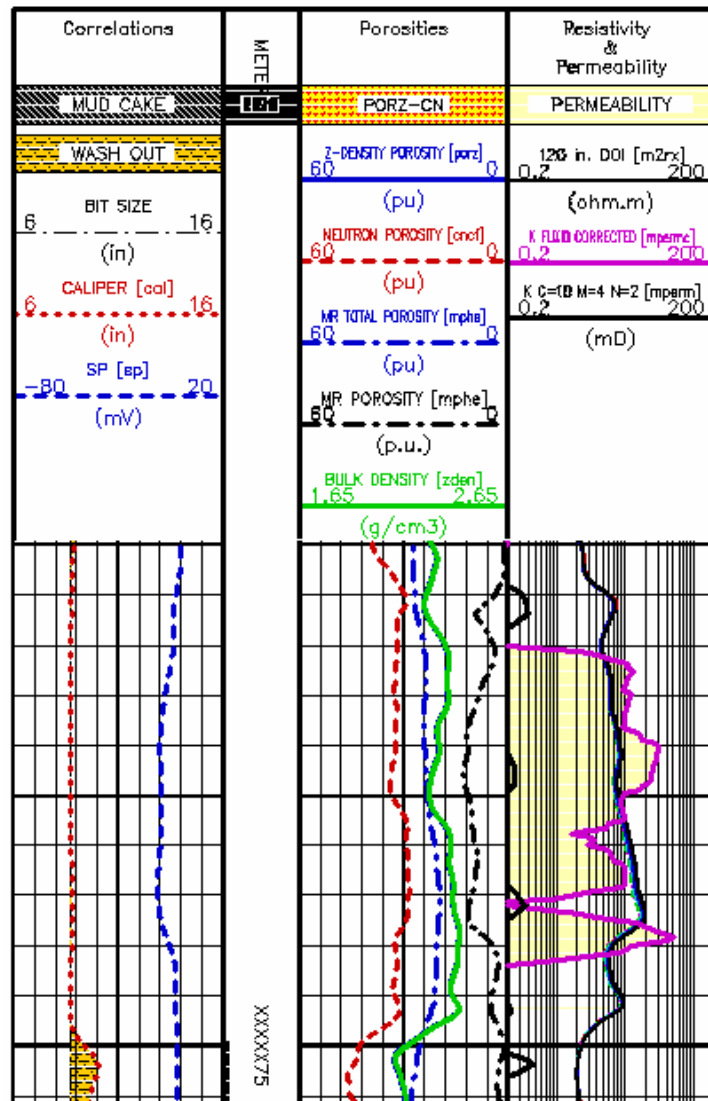


Figure 6 Log display of conventional and NMR log variables.

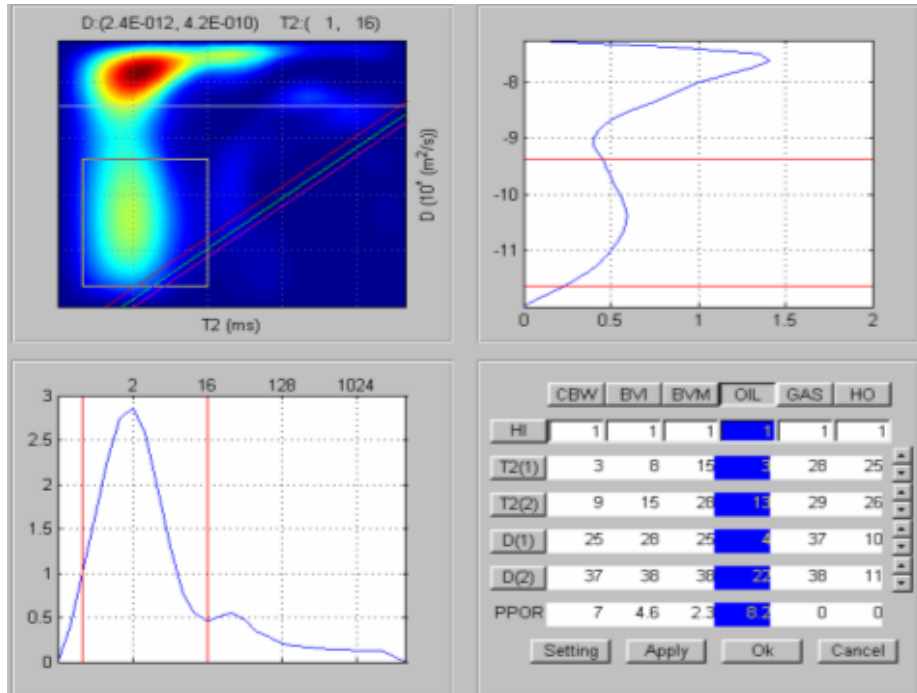


Figure 7. Diffusivity-T2 intrinsic map for fluid typing.

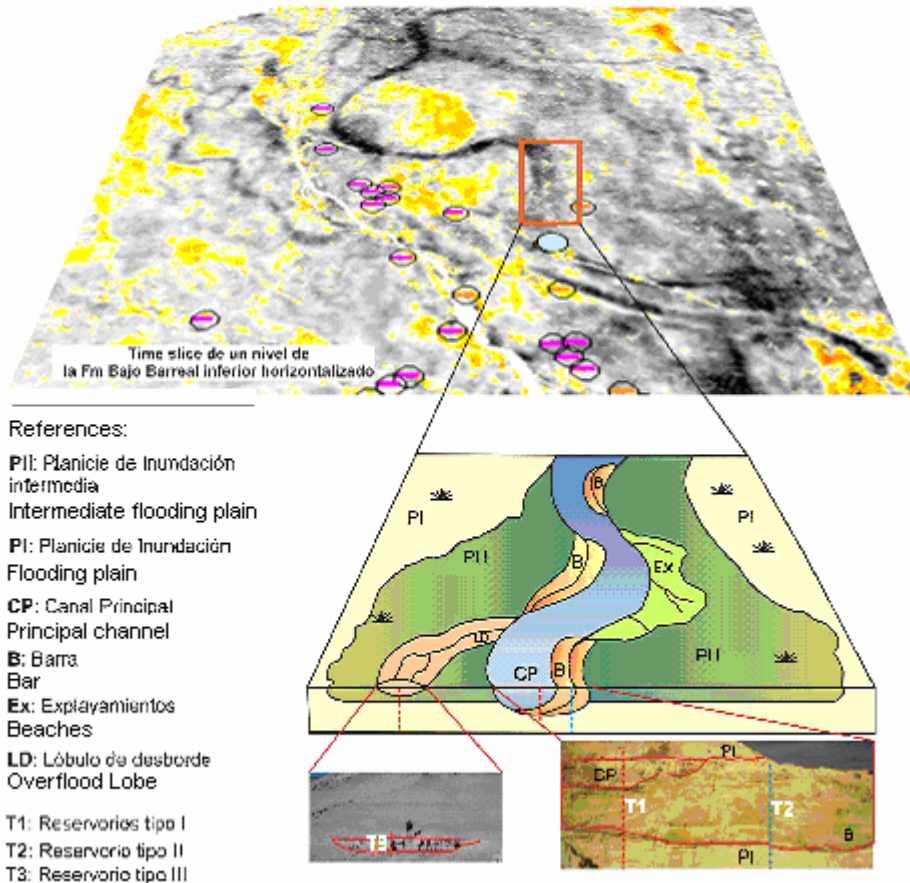


Figure 8. Conceptual geological model.